



# Buttress

Architecture for an equitable tomorrow

# Behind the B

---

Buttress is an architecture practice  
and proud B Corp.

We are passionate about what we  
do, and how we do it.

But we don't do anything alone.

We work with many amazing and  
varied clients, shaping places that  
have long-term positive impacts.

This workbook is a snap-  
shot of places we have  
shaped together.



## Buttress

[www.buttress.net](http://www.buttress.net)

---

©Buttress Architects

All rights reserved. No part of this publication may be reproduced, stored in a retrieval system or transmitted, in any form or by any means, electronic, mechanical, photocopying, recording or otherwise, without prior written permission of the publishers. Whilst every effort has been made to verify the text and images, the editor and publishers cannot accept liability for any omissions or erroneous statements.

First published in 2024 by Buttress Architects.

### Photography credits to:

Andy Marshall | Bailey Cooper Photography/Alamy stock photo | Daniel Hopkinson  
Charlotte Wood | Claire Harrison | Gavin Stewart | Gunner Gu | Hufton + Crow  
Paper Films | Simon Buckley | With Love Studios

### Architectural visualisation credits to:

Ambiente | Virtual Planit | Adriette Myburgh



## Working with you

---

Whether working with us as a client, community, team member or peer we believe we are at our best when we approach design as a collective, collaborative process.



**We believe in the power of people's creativity to help shape a better world, to build places with meaning.**



## Something old, something new, something borrowed ...

---

The context of every project is unique and in it we find opportunity to create, collaborate, and shape great places. Places that contribute to and pay forward to an equitable future.

As building typologies change, Buttress' deep cross-sector experience helps us to explore and develop new design ideas with our clients. We borrow from one to bring opportunity to another, all the while enriching the experience with understanding and expertise.

**We do not design in isolation.  
We are informed by, and look  
for opportunity in the physical,  
historical, and social fabric of life  
surrounding us.**





## Caernarfon Castle

---

Improving access at a World Heritage Site.



*"The vision for the project was to be able to stand here, with a coffee, and look out at 900 years of history in front of you. And it's that vision which has been delivered today. I'm so proud of the project – it's a joyful thing."*

Chris Wilson, Head of Conservation, Cadw

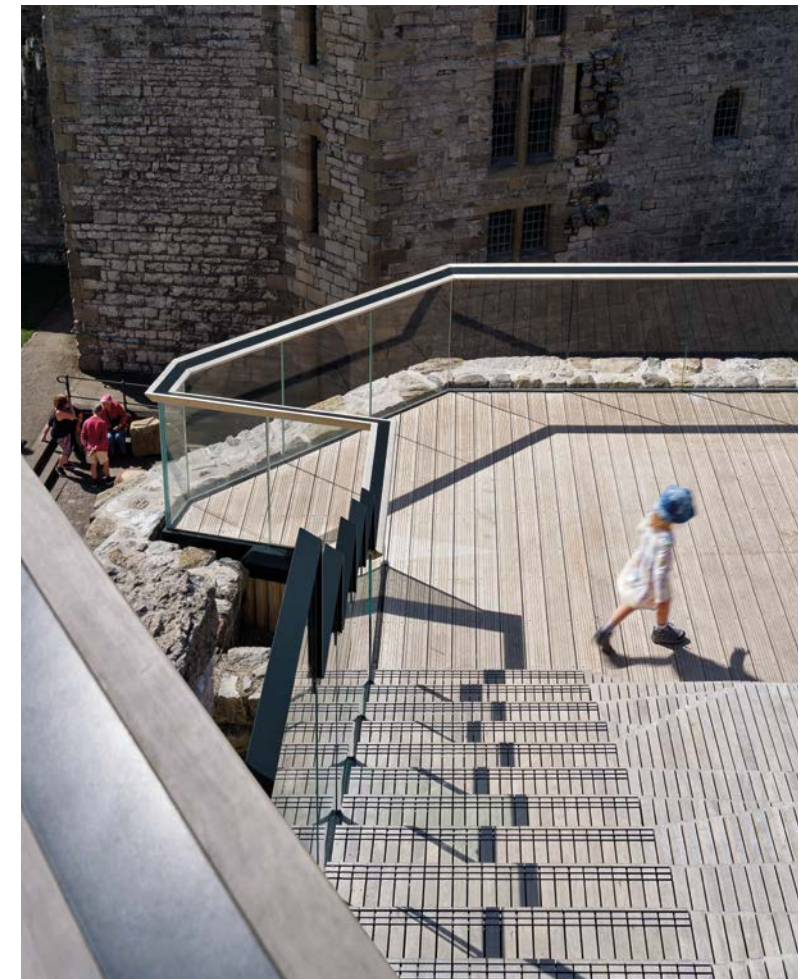






From the very first conversation we had with Cadw, it was clear that making the King's Gate accessible to all was our fundamental goal. The ability to bring everyone to the upper floor and shape a new place for them to dwell and discover more about the history of this extraordinary place has driven every design decision we have made through this complex and challenging project.

To do it with care and respect for the protected monument and to create an exciting piece of new architecture adds to the joy this project brings. That everyone can enjoy what we have achieved equally, is the real achievement.





## Timekeepers Square

---

A tranquil community awash with nature in the heart of the city.

Timekeepers Square is a special place. New houses in a conservation area frame views down the central, car-free street to St Philips Church and Salford Cathedral.

In 2018, as part of the Not Quite Light arts festival, we commissioned sound artist Dr Jacky Waldock to create a piece based upon the new community at Timekeepers.

Jacky reflected upon the tension between the desire for homes to be quiet and the need for social connection, commenting upon the isolation many can feel in their new super-insulated homes.

***"The communal and open access promenade and interconnected gardens have been an innovative solution in creating communal space, without compromising personal stillness."***

Dr Jackie Waldock, Not Quite Light 2018.











## Wythenshawe Hall

A phoenix rising from the ashes.

***"This much loved historic landmark has been brought back to life through exceptional, almost forensic, conservation work."***

Judges citation, Civic Trust Awards



Wythenshawe Hall is a Grade II\* listed manor house dating from the early 16<sup>th</sup> century that sits in registered parkland in South Manchester. It's a landmark that has been loved for hundreds of years.

Buttress undertook conservation and restoration following a devastating fire that caused significant damage to the principal rooms in the oak-framed medieval core, and destroyed the roof and clocktower.

What might have been lost, still endures at the heart of a community on the edge of ambitious regeneration and evolution.



## Birkdale retirement village

### Pride and place.

What does positive ageing look like and how do we design to support it?

Later living schemes like Birkdale retirement village create a community for independent retirement living based upon principles of support, connection, and wellbeing.

A contemporary development of new apartments contrasts the refurbished heritage of the school building, with old and new framed within extensive, landscaped grounds.

The new architecture is formed around a sweeping driveway, which arcs through the landscape, creating a purposeful sense of place for those regular moments where neighbours can connect, gather, and belong.





## The Depot

---

### A neighbourhood for all.

The Depot in South Manchester sits on the site of a former bus depot. We have been involved with the site from masterplan to delivery, creating a new residential neighbourhood with options for all ages to live together in the area.

Our masterplan sought to repair the community links north and south of the site. Where a tall brick boundary wall once sat to the bus depot, replacing it with new connected streets.

The existing and new residents have a choice of apartments, houses, and later living homes – allowing people to remain in the area they have always called home.







## What would you do?

---

At Buttriss, we believe that good design is as much about people as it is about buildings. We understand that our work, by its very nature, leaves an imprint on the landscape of people's lives, shaping the places they live, work, and spend their free time. This belief forms the cornerstone of our commitment to community engagement, a practice that ensures our projects resonate with, and benefit the communities they serve.





## Uppingham School Boarding Houses

---

Growing up together at school.



During the process of design for two new connected boarding houses at Uppingham School, our teams led a number of interactive workshops with the school's boarders to give them an active voice in the design of their new houses.

We heard that the culture of shared spaces is vitally important. It's where lifelong friendships are forged, and where growing up is done away from family.

In our designs there is a rhythm and hierarchy to spaces that reflect the boarding experience, made particular to Uppingham School.





## Mackie Mayor

---

From forgotten to found.

Originally part of the thriving Smithfield Market complex, the Mackie Mayor was largely forgotten and hidden in plain sight.

Buttress supported new owners Muse Developments with some initial holding repairs, and following its launch to market, we worked with Market Operations to adapt and re-present the listed building as a new food destination.

We retained as much of the original fabric and character 'as-found' and kept to low-key, reversible interventions, allowing the building to continually evolve.

The light touch has allowed people to complete the picture and make the place meaningful and entirely unique.

***"I love the atmosphere of Mackie the most – that, and of course, the food! I like that from the outside there's no hint of what's going on in the inside and when you open the doors ... boom! You get this blast of warm, human activity."***

Nick Johnson, Market Operations











## Ancoats Dispensary

---

Giving an Ancoats icon a new lease of life.

There are moments when even the most loved community landmark can be lost to time.

Vacant for years, held up by scaffolding and narrowly avoiding demolition, the story arc of Ancoats Dispensary seemed out of the hands of its many supporters.

By re-purposing the building as affordable apartments, Buttress and Great Places Housing Trust have fought hard to give the building a new lease of life.

The project captures a moment in time, as the area around the building develops at pace. Continuity and change are side-by-side, creating the backdrop to many new memories for the Ancoats community.







## Lincoln Medieval Bishops' Palace

### Sustainable conservation in action.

We have worked closely with English Heritage and Historic England to deliver their first flagship conservation project against strategic aims of sustainable conservation.

Standing in the shadow of Lincoln Cathedral, the Medieval Bishops' Palace was once one of the most important buildings in the country. Today the remaining structures are under the stewardship of English Heritage and are protected as a Scheduled Monument.

Sustainable conservation is a joined-up approach that looks at the immediate and longer-term scope of works for a project extending the period before further conservation or maintenance is required again.

If we do this now, can we intervene less in the long-term? Yes. And will that be better for the monument and for its custodians? Yes. Win-win.





## Monmouth Sports Pavilion

Beautifully resilient.

The sports pavilion at Monmouth School is a flexible, eye-catching building which sits on the school's playing fields adjacent to the River Wye. Located in a challenging floodplain setting, the building strategy allows for passive flooding of the ground floor, working with rather than trying to prevent, nature taking its course.

A design of two halves. The lower floor is robust and functional, used for team changing. Upstairs is open and light allowing spectators a seat on the large wrap-around balcony, to sit and watch their team play.

***"The pavilion is functional yet spacious, elegantly proportioned and scrupulously detailed."***

National Eisteddfod of Wales Architecture Selectors' statement







## The Quarry Bank Project

---

Telling the full story of Quarry Bank Mill for the first time.

The National Trust's Quarry Bank in Cheshire is one of the best-preserved textile mills of the Industrial Revolution and is now a museum of the cotton industry.

Buttress delivered a phased project funded by The National Lottery Heritage Fund, which restored, interpreted, and gave access to a number of buildings and structures for all those visiting the estate. The full story of Quarry Bank from the mill workers' cottages in Styal, to the mill and mill owner's house, is told within the landscape and gardens of the estate for all to access and enjoy.



***"We first started to visit 20 years ago when our daughters were little. It became part of the tapestry of their growing up."***

Ian Mainman, Visitor



## Wildhouse Lane

---

### Adding to the rural idyll.

On the edge of rolling countryside, Wildhouse Lane marries high-quality contemporary design with a rural location. At the heart of the development is a generous public open space, complete with walking paths, that invite residents and visitors to connect with nature.

This project represents more than just housing; it's an opportunity to build a place where people of all ages can enjoy a peaceful yet lively connection to the countryside.





## Lincoln Cathedral

---

A masterpiece of historic architecture that never stands still.

Lincoln Cathedral is one of the largest and most important medieval buildings in Western Europe. Dominating the cityscape, it is a masterpiece of historic architecture; and yet it never stands still.

Buttress were architects to the Cathedral for a period of 26 years, managing a rolling programme of conservation and repair alongside a number of stand-out restoration projects.

The latest included the conservation of the Romanesque frieze and Gallery of Kings on the West Front, surrounding the main doors into the Cathedral. Technical approaches and painstaking conservation have allowed the centuries-old sculptures to be revealed in situ again for the first time since the 1980s.



***"I think we have to remind ourselves of how very fortunate we are ... we might work on these buildings for many, many years, but we are only their custodians for a short period of time."***

Edward Kepczyk, Associate Director







## Greenhaus

---

A pioneering Passivhaus apartment scheme.

Passivhaus is the gold standard of energy-efficient design. A Passivhaus home has an ultra-low energy demand enjoying a consistent and comfortable ambient temperature, maintained with little or no heating or cooling.

With Greenhaus we have made this gold standard work with an affordable housing model. The apartments for a social landlord have taken the aspirational environmental standards and applied them to a project with a limited construction budget.

The seeming simplicity of the design belies the creativity, tenacity, curiosity, and skill employed by the whole team in delivering a great place to live.



***"I always said to myself that when I get my own place, I want it to be Passivhaus, and now I'm living in one – it couldn't be more perfect."***

Harriette Matthews, Greenhaus resident







## Hilton House

---

A 1960s classic, at home again in the 21<sup>st</sup> century.

Designed by renowned architect Richard Seifert, Hilton House in Manchester's Northern Quarter had stood still, silently declining as the area flourished around it.

The original vision was to simply dress up the elevations and re-market the space as low rent creative workspaces, but it was quickly apparent that Hilton House could do so much more. So with Cert Property and Sheila Bird Studio, we sought the solution to retain what was uniquely Hilton House and make it work for a new audience; making it at home again in the 21<sup>st</sup> century commercial space.





## First White Cloth Hall

---

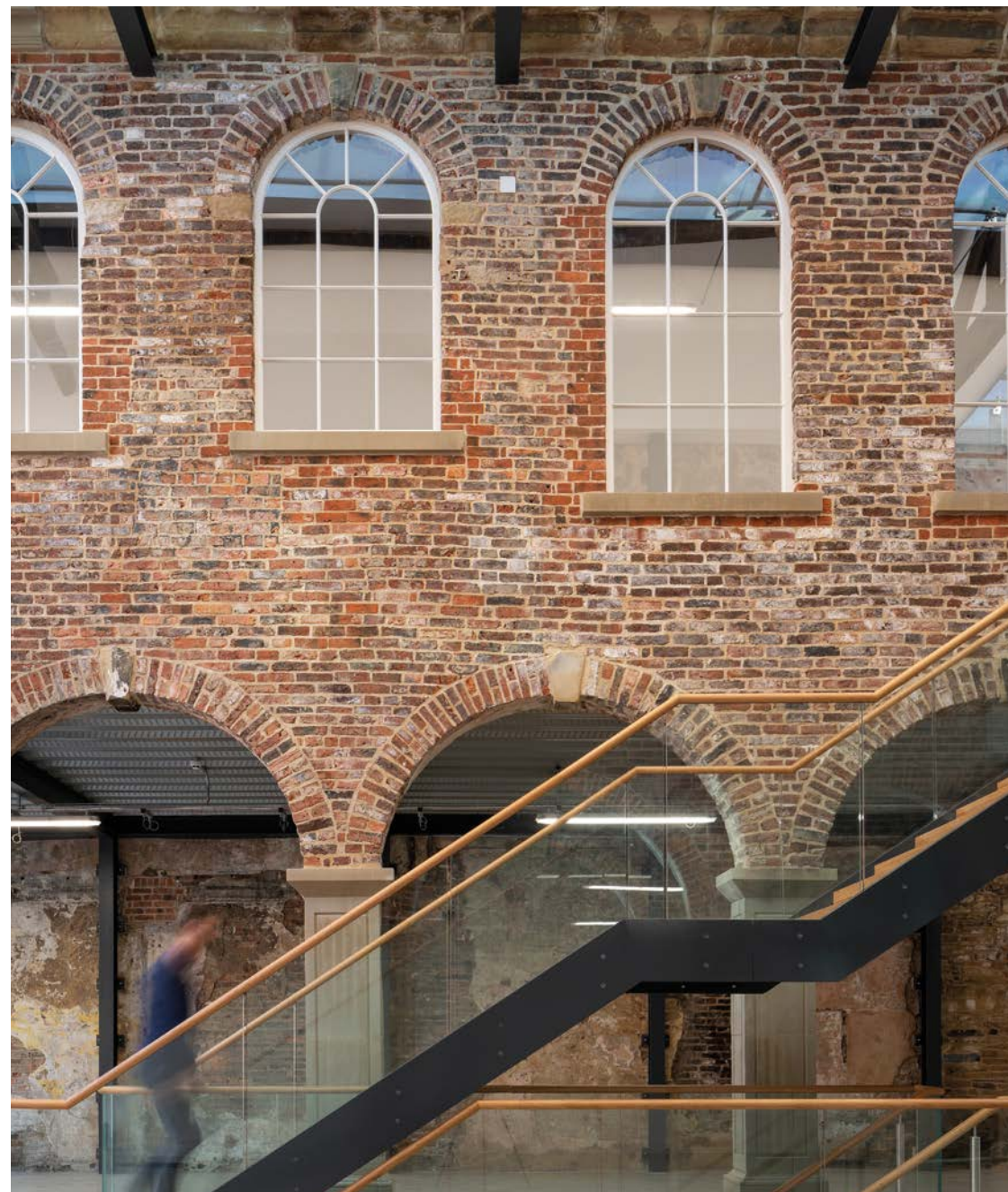
Saving Leeds' oldest building.

As the name suggests, First White Cloth Hall is a reminder of the North's textile boom when cloth was traded in bustling commercial gathering spaces.

Step forward to 2014 and Buttress were first approached to help understand if the much changed and partly demolished building had a future.

Looking beyond its present condition we could see potential. And through continual conversation with Historic England, we were able to agree the opportunities and approaches, which have allowed us to bring the building back from the brink of loss.

***After more than 20 years, First White Cloth Hall has a new future, and has been removed from Historic England's 'Heritage at Risk Register'.***







## Malham Tarn House

---

**For everyone, forever.**

The National Trust's Malham Tarn House is a unique building on the edge of a glacial lake in the heart of the Yorkshire Dales.

Our heritage consultants are working with the Trust to record and research the Grade II listed house at a point in time when it is between uses and empty.

To bring the blank canvas to life, we have consulted widely and identified people's knowledge, memories, and stories through a number of bespoke drop-in events.

These conversations have helped us to understand how the house connects with people. And this in turn helps the Trust to see where the future lies for this well-loved place.





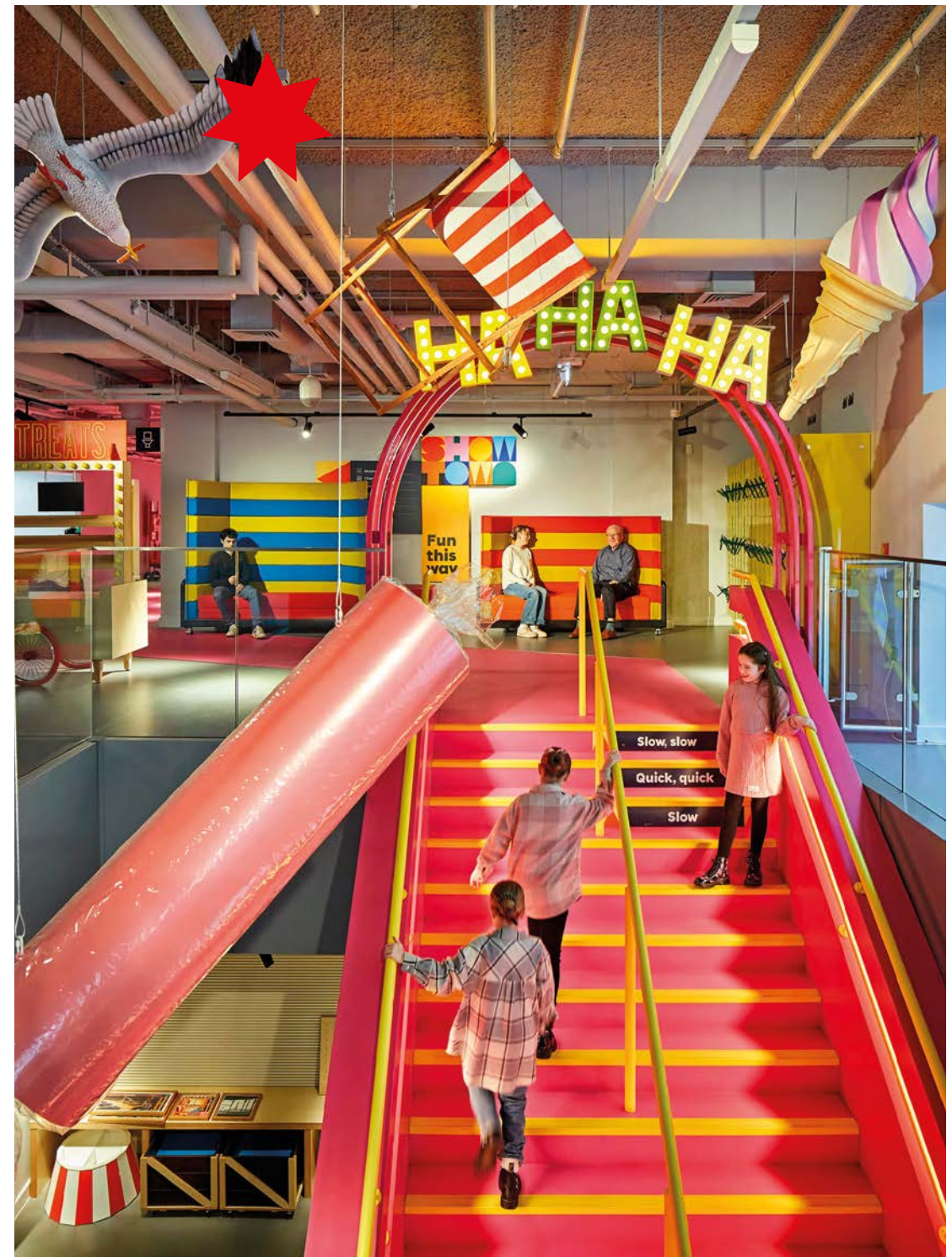
## Showtown

### Behind the curtain.

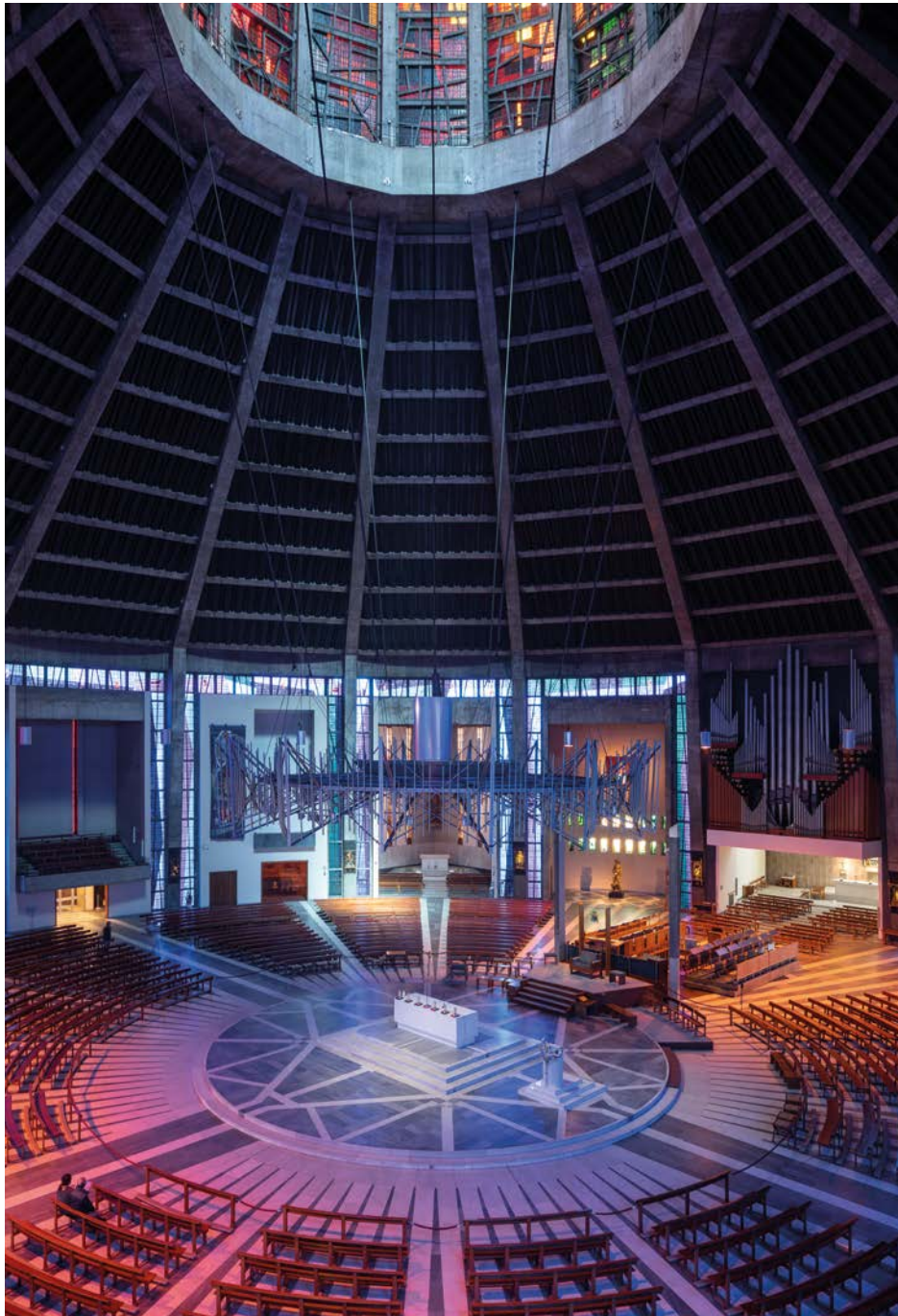
Despite being one of Britain's best loved seaside resorts, Showtown is Blackpool's first permanent museum.

Entering via a bright pink staircase, modelled on a stick of Blackpool rock, the scene is set for a vibrant and fun experience. A mixture of objects and stories from council collections, loaned objects from the V&A, and rarely seen objects from private collections are on show.

The experience isn't just sequins and glitter though; the spaces that house the museum are some of the hardest working that we design, informed by visitor experience, accessibility, security, and environmental strategies, that support visitors and collections equally.







## Liverpool Metropolitan Cathedral

The need to conserve buildings isn't necessarily defined by age.



The unique circular form and stained-glass lantern of the Grade II\* listed Metropolitan Cathedral of Christ the King in Liverpool are synonymous with Liverpool's skyline. It is one of the world's most significant post-war buildings.

Testament to the continual learning of our conservation architects, we are undertaking the first Quinquennial Inspection at the Cathedral, creating an informed review for the forward conservation and maintenance of this amazing building.





## Headstone Manor

---

When the whole is more than the sum of the parts.



Headstone Manor is a collection of listed buildings on a Scheduled Monument that together form the Harrow Museum.

We worked with the Museum to drive forward a large project that repositioned and articulated new uses for every element of the estate.

On the macro level we presented the big idea to unpick the potential of the site, and at the micro, created strategies against individual significance and opportunity for every listed building.

The result is a thriving local museum and busy wedding venue, with sensitive listed buildings in active use – with a long and sustainable future ahead of them.



## Chester Zoo

---

### Interesting bedfellows.

Chester Zoo's new grasslands' centrepiece is a large open savannah with giraffes, zebra, ostriches, and antelope living side-by-side.

Conceived by the zoo's conservationists, the new grasslands' immersive experience connects visitors and overnight guests to nature like never before.

At the centre of the experience is the welcome centre. It is an incredibly hard-working building in function and ambience. In use all day from family breakfast to sundowners on the terrace; it is flexible, whilst celebrating its low-impact design, and creates a beautiful backdrop to the guest experience.

More than simply functional, it delivers against the Zoo's mission to lead the way to protecting endangered wildlife by engaging visitors in an amazing day out.





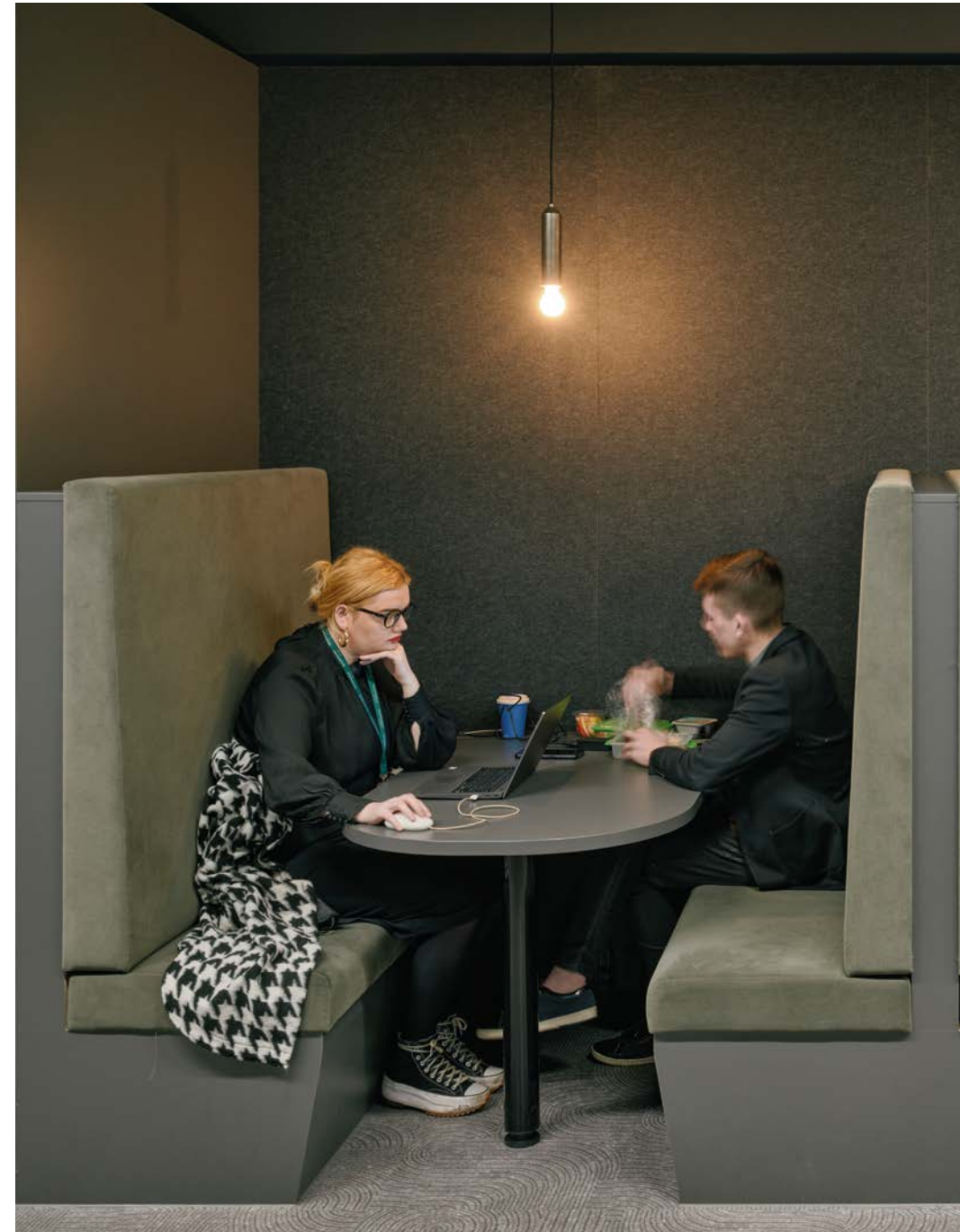
## Bruntwood SciTech at Circle Square

---

Giving new ways of working a strong identity.

As the nature of work evolves, so do our workplaces. With Bruntwood, we designed the interiors of its new landmark development Circle Square for global brands and future pioneers. Our start point was to listen and understand what experiences people want from the place they choose to work.

The feedback was for flexibility and choice. The new places created allow customers flexibility to work as they like in the space they prefer, and the ability to grow at the same address.











## RNCM

---

### Glimpses of the magic within.

If you have walked past the Royal Northern College of Music in Manchester you might have caught a glimpse of the students practising inside.

The design of the glazed facade allowed our architects to create these playful and purposeful windows into the conservatoire practice rooms.

The RNCM is acknowledged worldwide for its exciting and innovative approach to teaching and research. This small design move helps communicate some of the joy of music to us all.







## Foregate Hotel

Bedding into Chester's historic core.



Chester is one of the UK's most famous historic cities, famed for having the most complete city walls, the oldest racecourse, and the largest Roman amphitheatre in the country.

The new Foregate Hotel is part imaginative retrofit of the old black and white banking hall, and part new extension. It all knits together with careful and considered design detail that as an addition to the historic city centre continues to build on the legacy of those who have come before.



## Bolsover Castle

---

### Protected against the elements.

The Little Castle at Bolsover has ornate water spouts that direct water from the roofs. But what do you do when those water spouts are soaking visitors as they enter the building? And causing damage to the fabric of the Grade I listed building?

That was the problem posed to us by English Heritage at Bolsover Castle. How do you protect a Scheduled Monument when its original features are the issue?

We opted to protect the entrance rather than interfere with the exceptional historic detail of the Castle. A lightweight canopy now protects visitors as they enter. A simple and beautifully detailed modern intervention that sits quietly into the architecture whilst preventing further damage to the historic fabric.

And visitors no longer get wet.





## Listening in

---

When the keys are handed over, places really start to take shape. These are the stories of Brunswick.

As architects we bring our creativity and experience to bear, creating form and movement, connections, materials, colour, light, and texture. We know that a place is formed of more than just the elements that make it.

By listening to people's stories, their unique perspectives, we see the shape, the feeling, the essence of the place.

And by celebrating both, side by side, we give access to more voices in architecture.

***"I've got no intention of leaving, as it's the most secure place I've lived in. I enjoy waking up every day, which I think's good for a 72-year-old."***

Rob, or Robert Rex Burgess to use his Sunday name, lives in Brunswick Village extra care apartments, having moved to Manchester after retiring from the Merchant Navy.



Olga Asma is originally from Kyiv and has lived in Brunswick for 17 years. She has seen the estate change and now has an allotment which she shares with her mum.



Dymo Leung who moved from Hong Kong with his family to Manchester. He runs board games nights that help the local community, new and old, mix together.



Nazmina Begum, is Chair of the Tenants and Residents' Association who moved to the area with her husband five years ago.



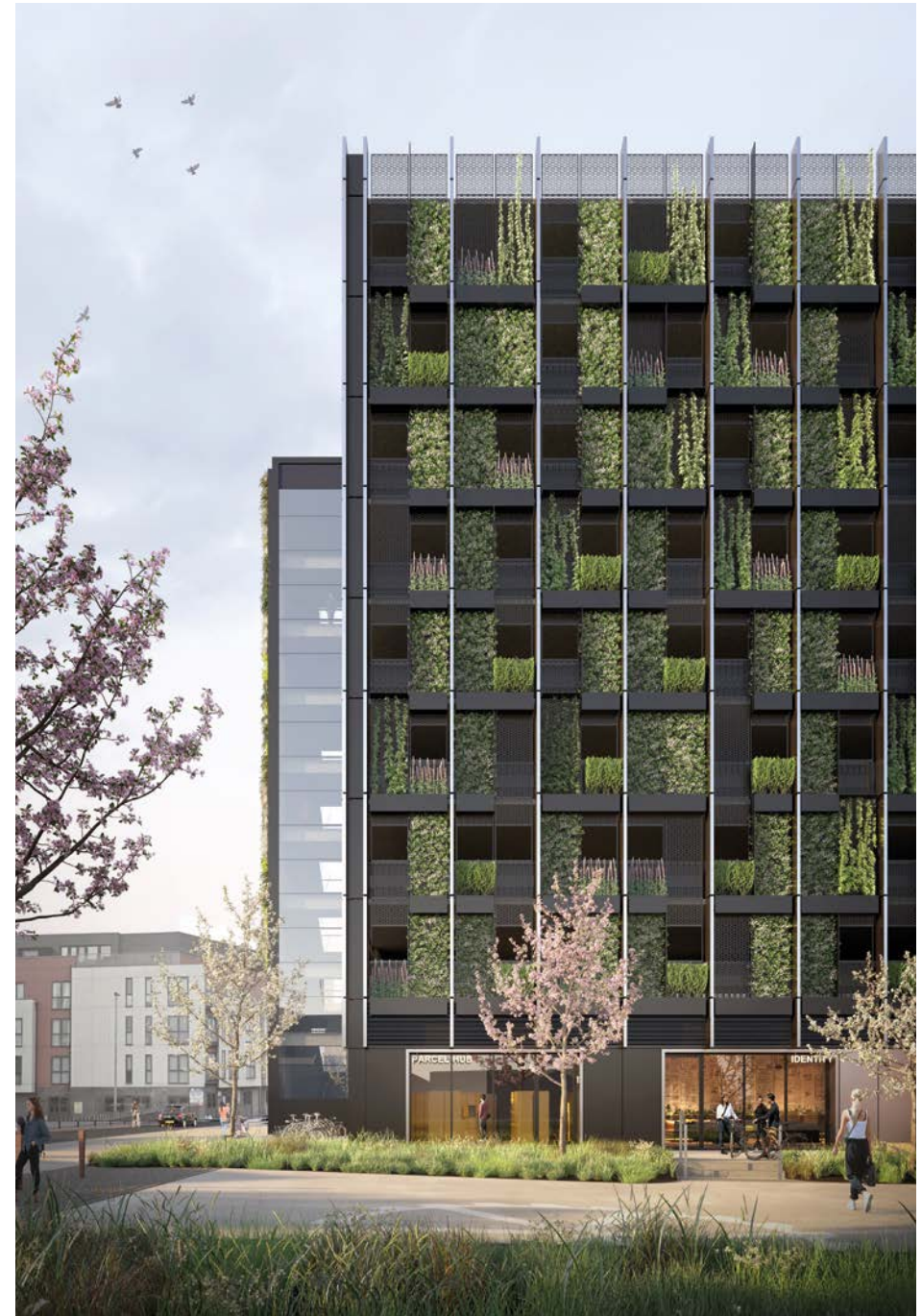
## Ancoats Mobility Hub

### Embedding sustainable transport choices.

Ancoats has transformed in the last ten years from a once industrial suburb of Manchester city centre to a vibrant residential neighbourhood with modern apartments, eateries, and businesses.

It is our home in Manchester.

As the area continues to grow, green space and routes are being established through the neighbourhood plan. The mobility hub embeds green transport choices, smart logistics, and shared services to support the area's positive future development.





## Valette Square

---

### Living streets in the heart of the city.

Alongside its sibling developments in Salford Central, Valette Square continues to marry high-quality contemporary design with strong place-shaping principles. With our clients, we take what we have learnt from previous schemes to play forward to the next.

Here, living streets prioritise pedestrians over cars and bring physical and visual connectivity. They create well-used pedestrian routes for Salford residents and those important opportunities to stop and chat with neighbours in shared spaces. The street is greened with new trees and sustainable drainage, bringing small wins for biodiversity gain in this largely urban environment.

We are learning from the positive impact of our previous Salford Central schemes and are weaving this knowledge into the next, creating great places to live that add to the bigger picture.

***How does what we have learnt from previous places help shape new ones?***





## Stretford Public Hall

Creating space for good things to happen.

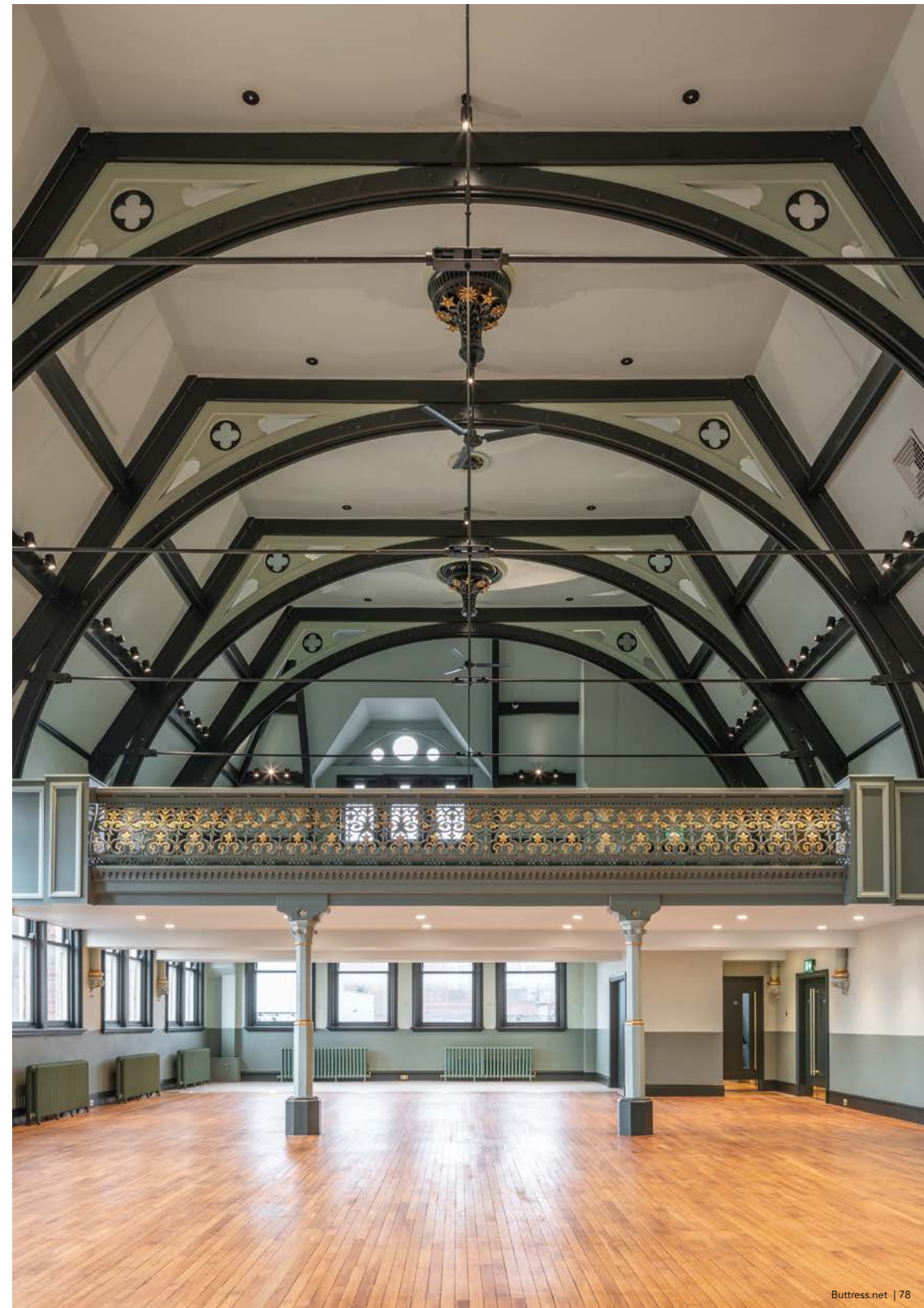
Stretford Public Hall is a community-owned, multi-purpose building, owned and run by the Friends of Stretford Public Hall since 2015.

Buttress has been working with them since 2019 to find ways to continually improve the spaces in which they make good things happen for the community.

By making the historic spaces more welcoming and flexible, they are better used and loved by more of the community. In turn, this makes the Hall more viable and sustainable within the community it was always intended for.

***"It was a gift to the people of Stretford – it was always intended as a public space – so it was important that we protected it."***

Kate McGeevor, Manager







*We are experts in architecture,  
urban design, heritage consultancy,  
and conservation architecture.*

## Team Buttriss

---

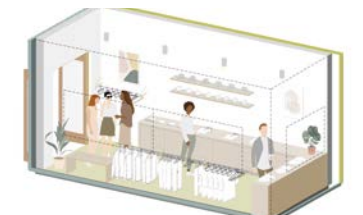
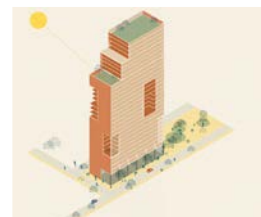
We are people designing spaces for people.

We are Buttriss Architects. A collective of over eighty creative and talented staff, with two studios in central Manchester and Leeds. We are architects and heritage consultants, place makers and shapers. We are cyclists, runners, culture vultures, and coffee connoisseurs.

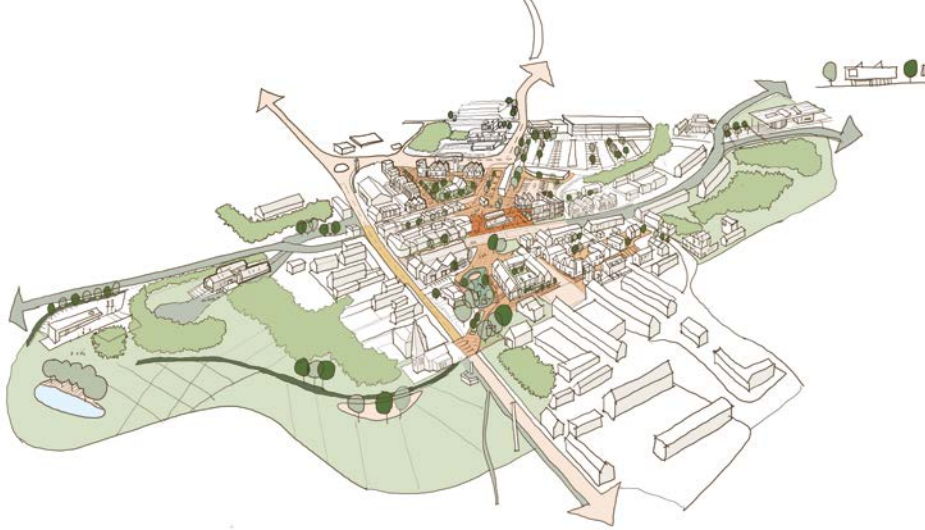
We are passionate about what we do, and how we do it. With heart, hope, and growth through challenge. We are a B Corp with a shared purpose to create architecture for an equitable tomorrow.











## Buttress and ...

Everything we do starts with a great idea.

Everything we do starts with people.

We are looking to the future, to an equitable tomorrow.

Are you? Let's do this together.



# Buttress

## Buttress Architects

Manchester - 41 Bengal St, Manchester  
M4 6AF

Leeds - Clockwise, Yorkshire House,  
Greek Street, Leeds LS1 5SH

[www.buttress.net](http://www.buttress.net)

[contact@buttress.net](mailto:contact@buttress.net)

**Certified**



**Corporation**